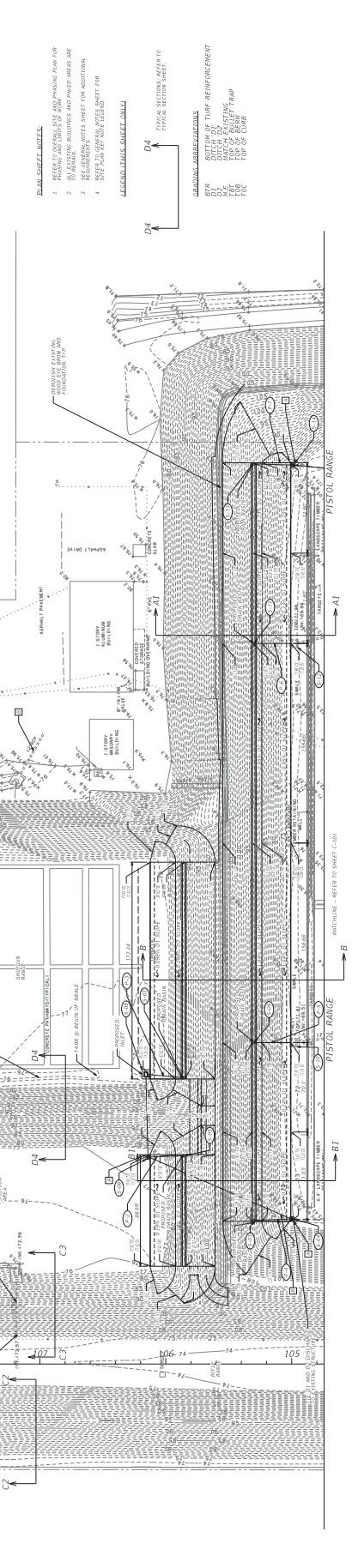
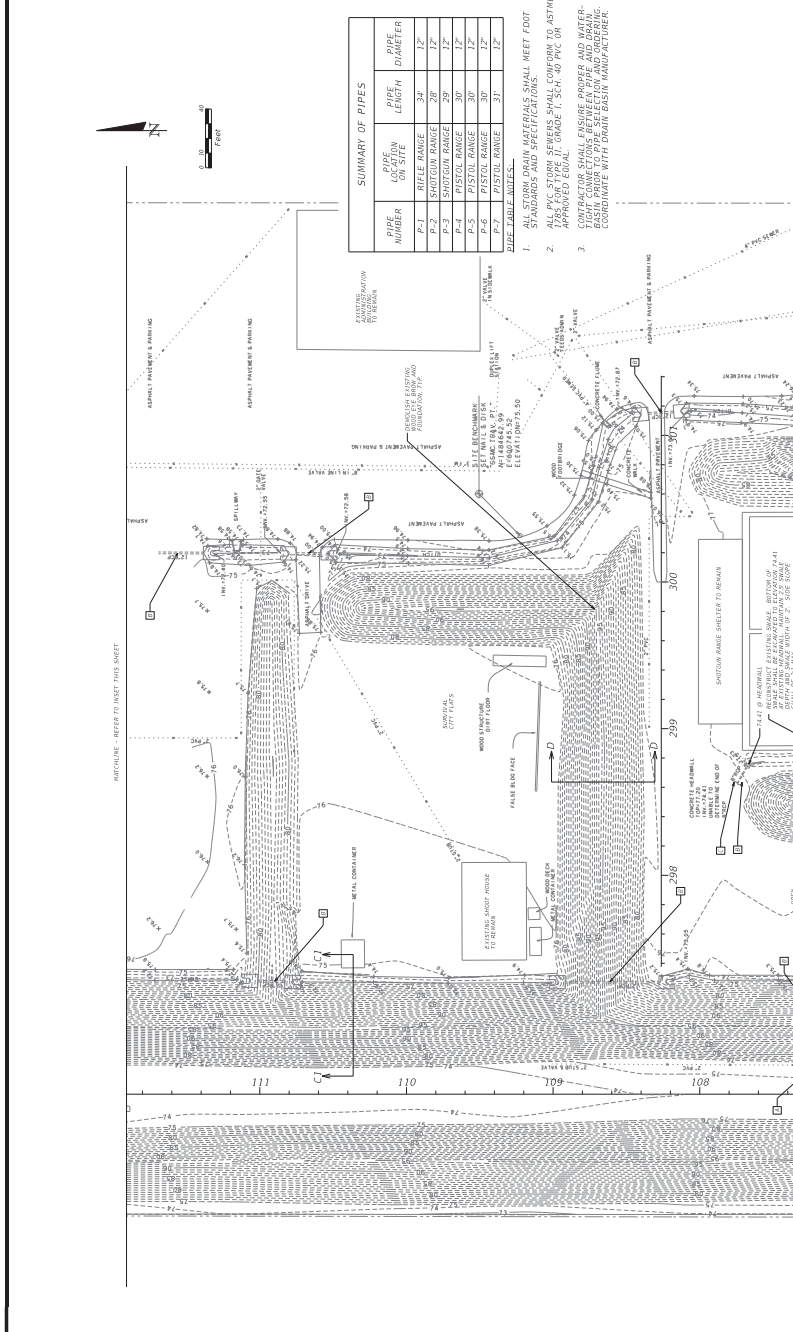
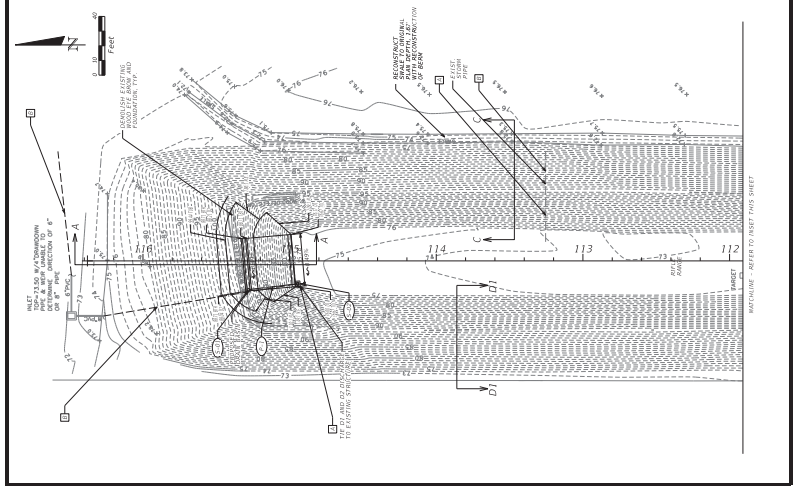




ARCHITECTS + ENGINEERS, INC.
 665 WEST WARREN AVENUE
 LONGWOOD, FLORIDA 32750
 BPA & ID CA NO. AAC002023
 FLORIDA P.E. NO. 64860
 MOLLY A. DEVIERO, P.E.

ISSUED FOR: PRELIMINARY PERMITTING
 DATE: 05.15.2013
 PROJECT: 2013.014
 PROJECT MANAGER: MOLLY A. DEVIERO, P.E. 64860
 DESIGNER: JAMES M. HENNING
 CHECKED BY: JAMES M. HENNING
 SCALE: VARIES
 NO. DATE DESCRIPTION
 REVISIONS: RECORD DWG



GENERAL NOTES:

- PROVIDE AND INSTALL THE 18" DIA. RAINWATER DRAIN FOR THE 12" DIA. PVC STORM SEWER.
- PROVIDE AND INSTALL THE 18" DIA. RAINWATER DRAIN FOR THE 12" DIA. PVC STORM SEWER.
- PROVIDE AND INSTALL THE 18" DIA. RAINWATER DRAIN FOR THE 12" DIA. PVC STORM SEWER.
- PROVIDE AND INSTALL THE 18" DIA. RAINWATER DRAIN FOR THE 12" DIA. PVC STORM SEWER.

LEGEND:

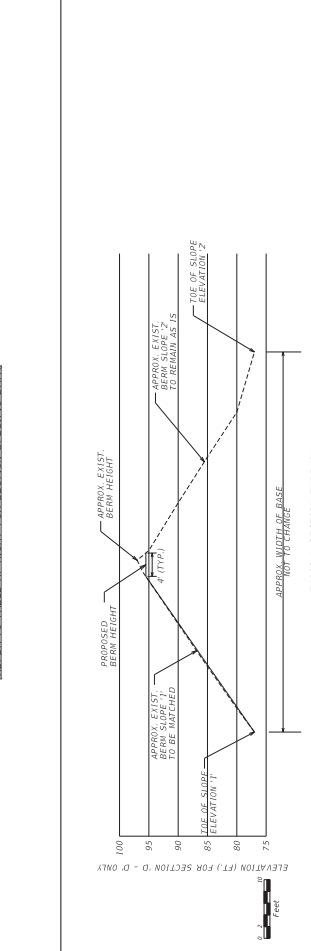
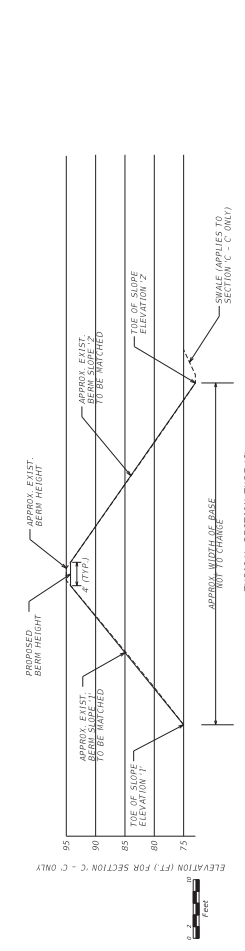
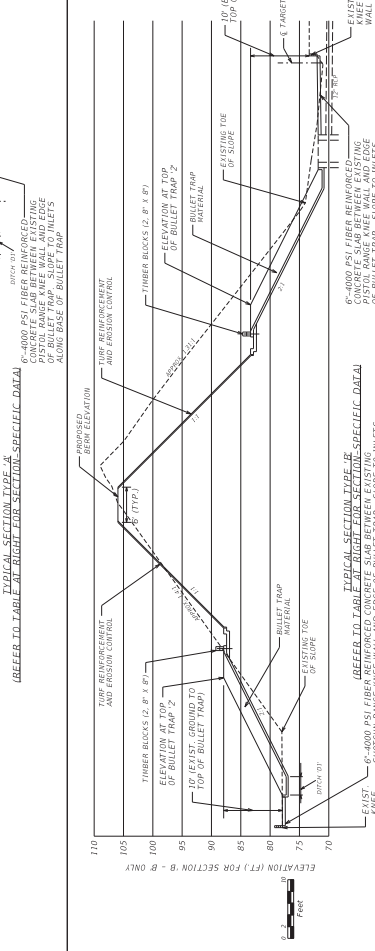
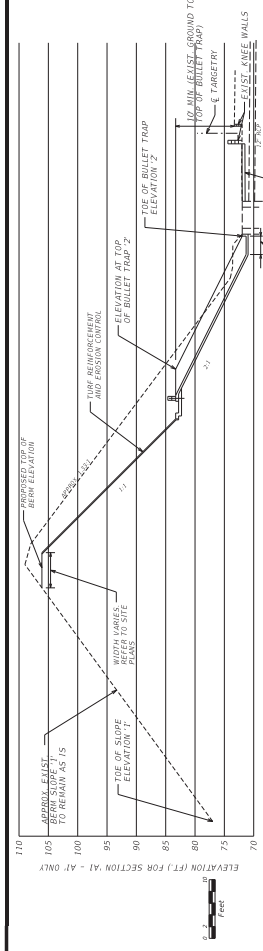
- 12" DIA. PVC STORM SEWER
- 12" DIA. PVC STORM SEWER WITH MANHOLE
- 12" DIA. PVC STORM SEWER WITH MANHOLE AND 18" DIA. RAINWATER DRAIN
- 12" DIA. PVC STORM SEWER WITH MANHOLE AND 18" DIA. RAINWATER DRAIN AND 18" DIA. RAINWATER DRAIN

GENERAL NOTES:

- PROVIDE AND INSTALL THE 18" DIA. RAINWATER DRAIN FOR THE 12" DIA. PVC STORM SEWER.
- PROVIDE AND INSTALL THE 18" DIA. RAINWATER DRAIN FOR THE 12" DIA. PVC STORM SEWER.
- PROVIDE AND INSTALL THE 18" DIA. RAINWATER DRAIN FOR THE 12" DIA. PVC STORM SEWER.
- PROVIDE AND INSTALL THE 18" DIA. RAINWATER DRAIN FOR THE 12" DIA. PVC STORM SEWER.

LEGEND:

- 12" DIA. PVC STORM SEWER
- 12" DIA. PVC STORM SEWER WITH MANHOLE
- 12" DIA. PVC STORM SEWER WITH MANHOLE AND 18" DIA. RAINWATER DRAIN
- 12" DIA. PVC STORM SEWER WITH MANHOLE AND 18" DIA. RAINWATER DRAIN AND 18" DIA. RAINWATER DRAIN



DATA TABLE FOR TYPICAL SECTION TYPE 'A'

TYPICAL SECTION	TOE OF SLOPE ELEVATION 1	TOE OF SLOPE ELEVATION 2	TOE OF BULLET TRAP 1	TOE OF BULLET TRAP 2	ELEVATION AT TOP OF BULLET TRAP 1	ELEVATION AT TOP OF BULLET TRAP 2	APPROX. EXIST. BERM HEIGHT TO REMAIN AS IS	APPROX. EXIST. BERM HEIGHT TO REMAIN AS IS	APPROX. WIDTH OF BASE NOT TO CHANGE
A - A	75	79	N/A	N/A	88.71	83.3	99.44	106.1	126.72
A1 - A1	77	79	N/A	N/A	83.3	83.3	106.1	109	100.10

DATA TABLE NOTES:
 1. ALL DATA WITHIN THIS TABLE APPLIES ONLY FOR LOCATIONS. ELEVATIONS AND SLOPES WILL VARY APPROXIMATELY 10' W/ WITHIN EACH BERM AREA TO BE IMPROVED.
TYPICAL SECTION NOTES:
 1. DIMENSIONS OF THE TOP AND BOTTOM OF THE BULLET TRAP.
 2. THE TYPICAL SECTION SHOWS DETAILS TYPICAL SECTION 'A1 - A1'. DIMENSIONS PREFER TO DATA TABLE. HOWEVER, IT WILL GRAPHICALLY CORRELATE WITH SECTION 'A1 - A1' AS SHOWN.

DATA TABLE FOR TYPICAL SECTION TYPE 'B'

TYPICAL SECTION	TOE OF SLOPE ELEVATION 1	TOE OF SLOPE ELEVATION 2	TOE OF BULLET TRAP 1	TOE OF BULLET TRAP 2	ELEVATION AT TOP OF BULLET TRAP 1	ELEVATION AT TOP OF BULLET TRAP 2	APPROX. EXIST. BERM HEIGHT TO REMAIN AS IS	APPROX. EXIST. BERM HEIGHT TO REMAIN AS IS	APPROX. WIDTH OF BASE NOT TO CHANGE
B - B	71.92	73.89	83.3	83.3	106.1	106.1	105.10	105.10	90.17
B1 - B1	68	71.81	85	85	105	105	105.10	105.10	91.20

DATA TABLE NOTES:
 1. ALL DATA WITHIN THIS TABLE APPLIES ONLY FOR LOCATIONS. ELEVATIONS AND SLOPES WILL VARY APPROXIMATELY 10' W/ WITHIN EACH BERM AREA TO BE IMPROVED.
TYPICAL SECTION NOTES:
 1. REFER TO SHEET C-200 DETAILS SHEET FOR DETAILS AND DIMENSIONS OF THE TOP AND BOTTOM OF THE BULLET TRAP.
 2. THE TYPICAL SECTION SHOWS DETAILS TYPICAL SECTION 'B - B'. DIMENSIONS PREFER TO DATA TABLE. HOWEVER, IT WILL GRAPHICALLY CORRELATE WITH SECTION 'B - B' AS SHOWN.

DATA TABLE FOR TYPICAL SECTION TYPE 'C'

TYPICAL SECTION	TOE OF SLOPE ELEVATION 1	TOE OF SLOPE ELEVATION 2	TOE OF SLOPE ELEVATION 3	TOE OF SLOPE ELEVATION 4	APPROX. EXIST. BERM HEIGHT TO REMAIN AS IS	APPROX. EXIST. BERM HEIGHT TO REMAIN AS IS	APPROX. EXIST. BERM HEIGHT TO REMAIN AS IS	APPROX. EXIST. BERM HEIGHT TO REMAIN AS IS	APPROX. WIDTH OF BASE NOT TO CHANGE
C - C	75	79	83.3	83.3	106.1	106.1	105.10	105.10	90.17
C1 - C1	74	74	77	77	105.10	105.10	105.10	105.10	91.20
C2 - C2	74	74	77	77	105.10	105.10	105.10	105.10	91.20
C3 - C3	75	75	77	77	105.10	105.10	105.10	105.10	91.20
C4 - C4	75	75	77	77	105.10	105.10	105.10	105.10	91.20
C5 - C5	76	76	77	77	105.10	105.10	105.10	105.10	91.20

DATA TABLE NOTES:
 1. ALL DATA WITHIN THIS TABLE APPLIES ONLY FOR LOCATIONS. ELEVATIONS AND SLOPES WILL VARY APPROXIMATELY 10' W/ WITHIN EACH BERM AREA TO BE IMPROVED.
TYPICAL SECTION NOTES:
 1. THE TYPICAL SECTION SHOWS DETAILS TYPICAL SECTION 'C - C'. DIMENSIONS PREFER TO DATA TABLE. HOWEVER, IT WILL GRAPHICALLY CORRELATE WITH SECTION 'C - C' AS SHOWN.

DATA TABLE FOR TYPICAL SECTION TYPE 'D'

TYPICAL SECTION	TOE OF SLOPE ELEVATION 1	TOE OF SLOPE ELEVATION 2	TOE OF SLOPE ELEVATION 3	TOE OF SLOPE ELEVATION 4	APPROX. EXIST. BERM HEIGHT TO REMAIN AS IS	APPROX. EXIST. BERM HEIGHT TO REMAIN AS IS	APPROX. EXIST. BERM HEIGHT TO REMAIN AS IS	APPROX. EXIST. BERM HEIGHT TO REMAIN AS IS	APPROX. WIDTH OF BASE NOT TO CHANGE
D - D	75	79	83.3	83.3	106.1	106.1	105.10	105.10	90.17
D1 - D1	75	79	83.3	83.3	106.1	106.1	105.10	105.10	90.17
D2 - D2	75	79	83.3	83.3	106.1	106.1	105.10	105.10	90.17
D3 - D3	74	74	77	77	105.10	105.10	105.10	105.10	91.20

DATA TABLE NOTES:
 1. ALL DATA WITHIN THIS TABLE APPLIES ONLY FOR LOCATIONS. ELEVATIONS AND SLOPES WILL VARY APPROXIMATELY 10' W/ WITHIN EACH BERM AREA TO BE IMPROVED.
TYPICAL SECTION NOTES:
 1. THE TYPICAL SECTION SHOWS DETAILS TYPICAL SECTION 'D - D'. DIMENSIONS PREFER TO DATA TABLE. HOWEVER, IT WILL GRAPHICALLY CORRELATE WITH SECTION 'D - D' AS SHOWN.
 2. NO IMPROVEMENTS PROPOSED FOR THIS SIDE OF BERM.

ARCHITECTS + ENGINEERS, INC. 665 WEST WARREN AVENUE, LONGWOOD, FLORIDA 32750
 BPA & ID CA NO. AAC02023
 FLORIDA P.E. NO. 64860
 MOLLAY A. DEVERO, P.E. 64860
 NOT A REGISTERED ENGINEER
 DATE: 05.15.2013
 PROJECT: 2013.014
 COUNTY: MA
 PROJECT MANAGER: MAB
 SCALE: VARIES
 SHEET: 02 OF 12
 ORANGE COUNTY SHERIFFS OFFICE
 TYPICAL SECTIONS
 FOR
 GUN RANGE IMPROVEMENTS
 C-200





ARCHITECTS + ENGINEERS, INC.
 665 WEST WARREN AVENUE
 LONGWOOD, FLORIDA 32750
 BPE CA NO. 5886
 BPA & ID CA NO. AAC0002023
 MOLLY A. DEVIERO, P.E.
 FLORIDA P.E. NO. 64860

ISSUED FOR:	<input type="checkbox"/> PRELIMINARY	<input type="checkbox"/> PERMITTING	<input type="checkbox"/> FINAL	<input type="checkbox"/> CONSTRUCTION	<input type="checkbox"/> RECORD DWG
NOT VALID UNLESS SIGNED & DATED BY A REGISTERED ENGINEER					
DATE:	05.15.2013				
PROJECT:	2013.014				
PROJ. MANAGER:	MAY				
DESIGNER:	MAB				
SCALE:	VARIES				
NO.	DATE	DESCRIPTION			

